

Conqueror X: Setting Cleaning Mode After Lane Closure

Cleaning Mode marks the lane with a caution sign on the All Lanes Screen and disables the ability to check the lane in until Cleaning Mode has been manually disabled on that lane. Having Cleaning Mode enable automatically after lane closure allows greater visibility in determining which lanes need attention prior to issuing to the next guest. Cleaning Mode after lane closure is best set up in default Lane Options.

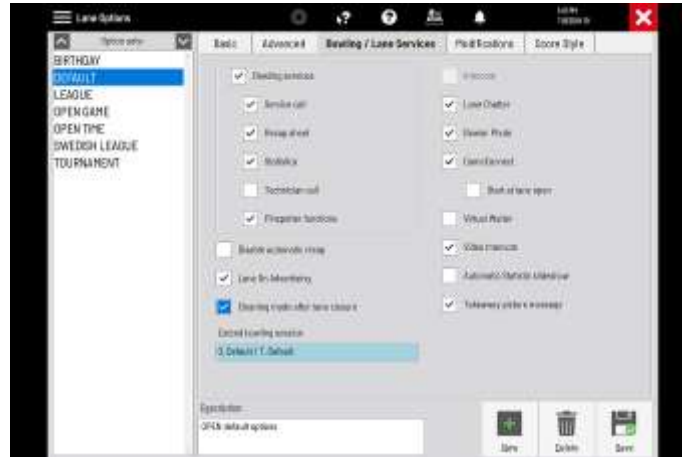
- From the Conqueror X home screen, click on Setup, Bowling Setup, Lane Options.



- Select the desired Lane Option set on the left side of the screen.



- Click on the "Bowling/Lane Services" tab at the top of the screen. Put a check mark next to "Cleaning mode after lane closure."



- Click "Save" to confirm the change to the Lane Option set. Repeat the steps for each Lane Option set where Cleaning Mode after lane closure is desired.
- At the conclusion of a bowling session, the lane will prepare for closure.



- After the lane is checked out (either manually or through the automatic lane closure option in Center Setup), it will automatically go into Cleaning Mode.



- Once the lane is ready to be issued to the next guest, click on "Cleaning Mode" then click "Yes" to return the lane to play mode.